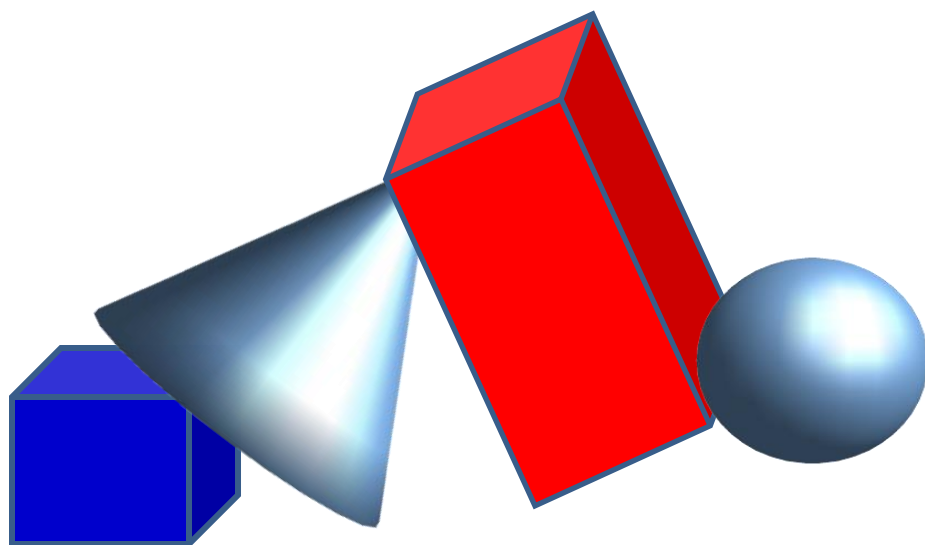
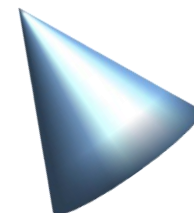


Troviamo le forme

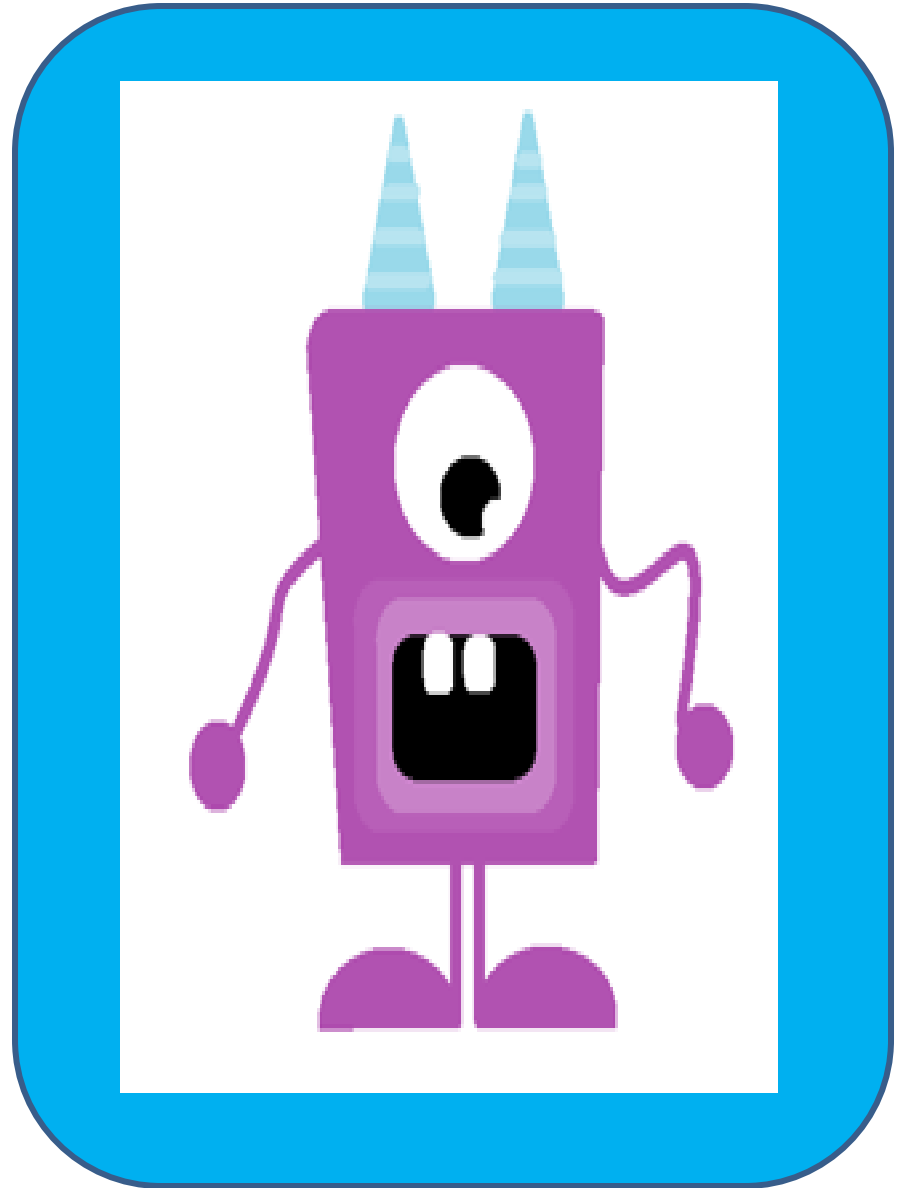


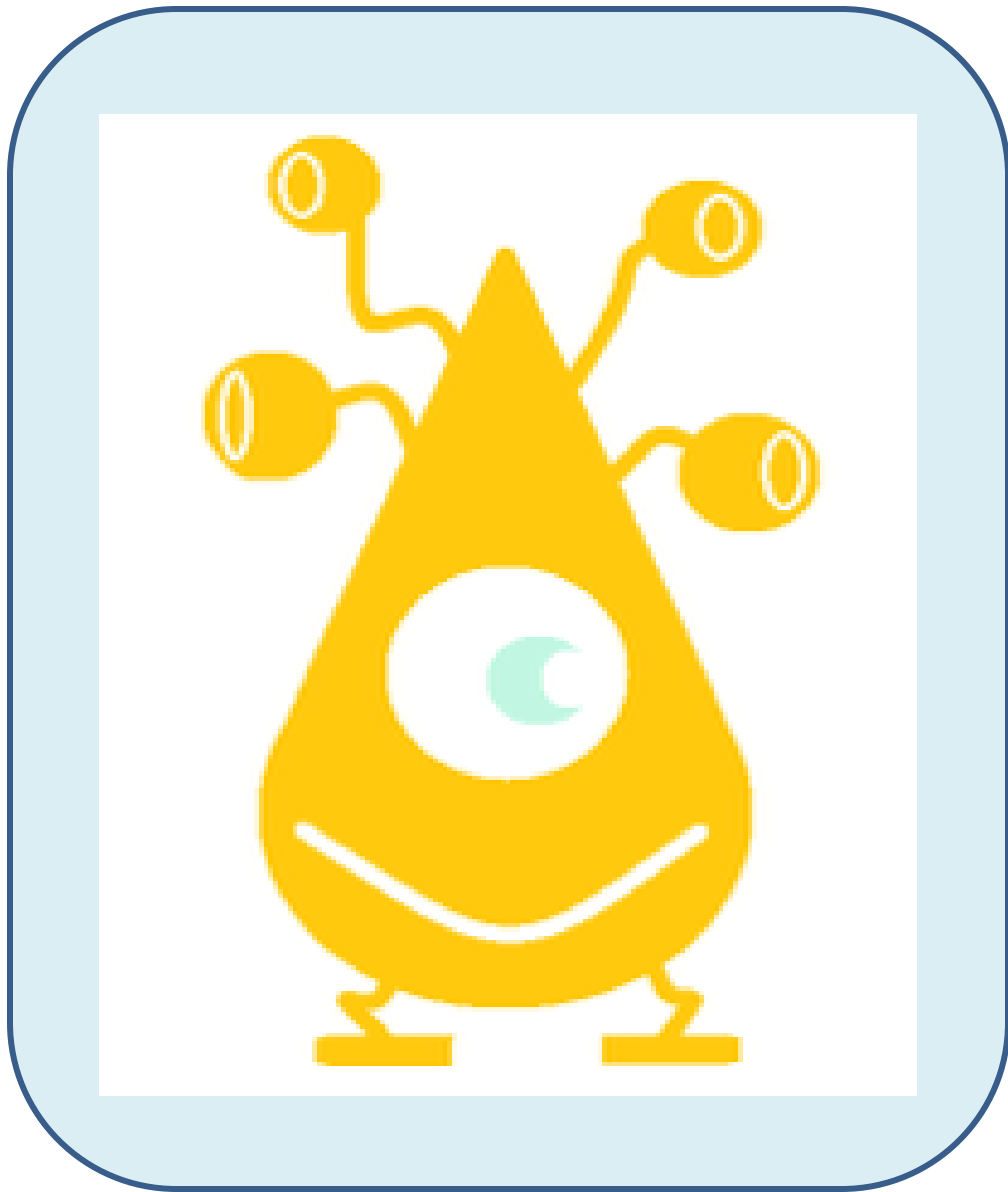
I MOSTRI



MOSTRO
TONDO

MOSTRO
RETTANGOLO





MOSTRO
TRIANGOLO

MOSTRO
QUADRATO



MOSTRO STELLA





MOSTRO
TONDO

**MOSTRO
RETTANGOLO**





MOSTRO
QUADRATO

MOSTRO
TRIANGOLO



MOSTRO CUORE





MOSTRO
QUADRATO

MOSTRO
TONDO



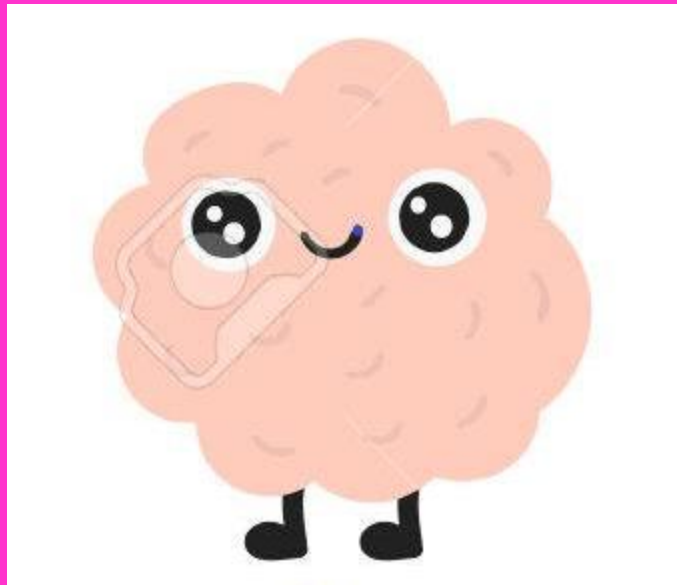


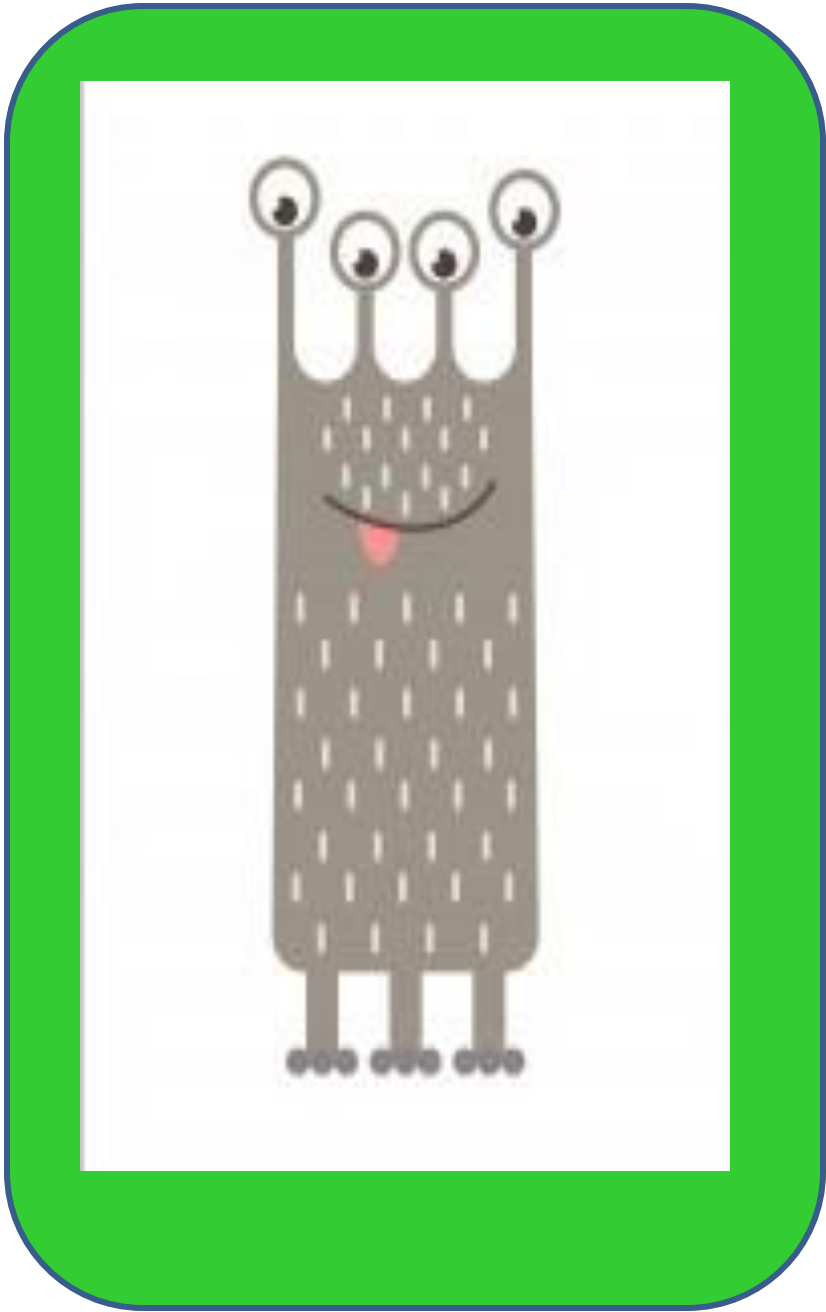
MOSTRO
RETTANGOLO

MOSTRO
TRIANGOLO



MOSTRO NUVOLA





MOSTRO
RETTANGOLO

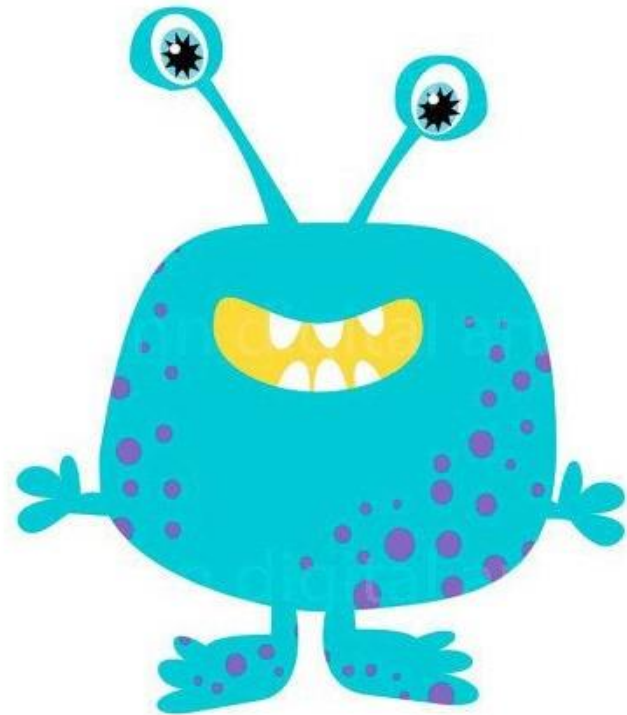
MOSTRO
TRIANGOLO





MOSTRO
TONDO

MOSTRO
QUADRATO



AIUTOAIUTOCHE PAURA!
QUANTI MOSTRI MOSTRUOSI.
SCAPPIAMO!
NASCONDIAMOCI...CORRETE!
BAMBINI! MA VOI NON AVETE
PAURA?



MOSTRO
FIFONE

CIAO